

## SPRING 2023 COURSES

The following short courses for Spring 2023 are now open for bookings on our webshop at <https://shop.theschoolofhistoricaldress.org.uk>

We have a public FACEBOOK page and an INSTAGRAM page with posts about our activities <https://www.facebook.com/theschoolofhistoricaldress> and [instagram/theschoolofhistoricaldress1](https://www.instagram.com/theschoolofhistoricaldress1)

---

### DIOR AND COUTURE TECHNIQUES 1950-2020 11TH & 12TH FEBRUARY



#### 2-Day Course - 10am to 6pm

This course will look at on the way that a variety of the materials and construction techniques used for women's couture garments have developed over the past 70 years with a focus on those by Dior.

Students will work samples of the techniques with suitable fabrics, threads and haberdashery.

Original examples of garments and a toile will be available for close examination by students.

£210 full price / £150 concession price

6 PLACES



# THE ART OF DRAPING 1900-1940

## 18th and 19th FEBRUARY



### 2-Day Course - from 10am to 6pm

Draping is the art of shaping garments directly to the form of the body. By the early decades of the 20th century, women's fashion evolved into less restrictive, softer styles, with couturiers such as Madeline Vionnet draping the fabric around the body, pinning, cutting, and seaming to create the silhouette.

Students will learn draping and construction techniques and make a half-scale toile. Examples from the School's collection of early-mid 20th century garments will be available for close study.

£210 full price / £150 concession price

6 PLACES





# THE CUT & CONSTRUCTION OF 18TH BREECHES

## 24TH, 25TH and 26TH FEBRUARY



### 3-Day Course - from 10am to 6pm

A practical insight into the cut and construction of men's breeches with a focus on the development of the shapes.

To get an idea of the fit of 18th century breeches, participants will use a replica of a pair of breeches.

Students will draft a pattern and make a stitching sampler.

Surviving examples of breeches from the school collection will be available for closer inspection. These include the early 18th century figured velvet breeches shown here.

£315 full price / £225 concession price

6 PLACES





# TAILORING STITCHES & TECHNIQUES c.1400-1800 4th & 5th MARCH

2-Day Course - from 10am to 6pm

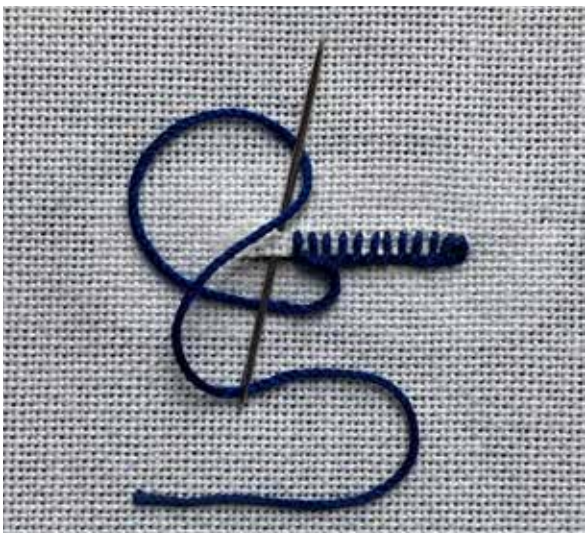
This course will cover the evolution of tailoring and students will work samplers of key techniques from each century, such as buttonholes, seam construction and padding. A pattern and materials will be provided for students to finish their samplers after the course.

Surviving 16th, 17th and 18th century garments and 15th century textiles that employed tailoring techniques, all from the School Collection, will be available for close examination. These include the early 18th century figured velvet coat shown below.

Colour images from the Janet Arnold Archive of earlier garments will also be used as references.

£210 full price / £150 concession price

6 PLACES



# THE ART OF THE SEAMSTRESS 1600-1900 11th & 12th MARCH

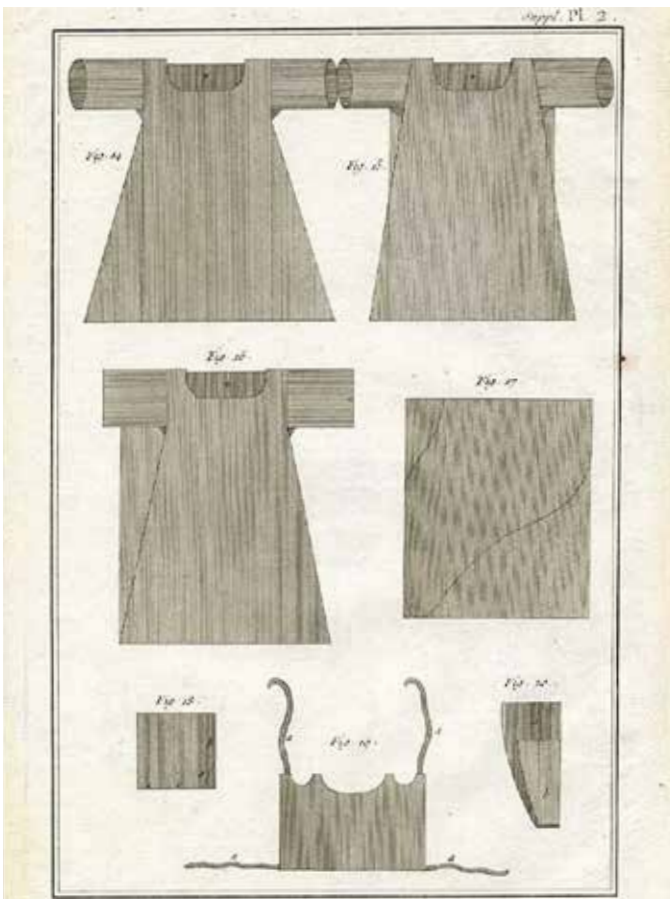
2-Day Course - from 10am to 6pm

This course will explore the working methods of female seamstresses over the 300 years from c.1600 to 1900, using original cotton and linen garments and accessories they cut and made for both men and women. Surviving examples of these will be available in the classroom for close examination by students, together with samplers, documents and visual sources.

The way seamstresses used their fabric and made patterns by the 'folding' method will be explored by students who will also work samples of the 'fine plain sewing'; stitches, seams and other construction and decorative techniques they practiced.

£210 full price / £150 concession price

6 PLACES





# THE CUT & CONSTRUCTION OF 18TH C FLAT-CUT MANTUAS & BEDGOWNS

## 25th & 26th MARCH



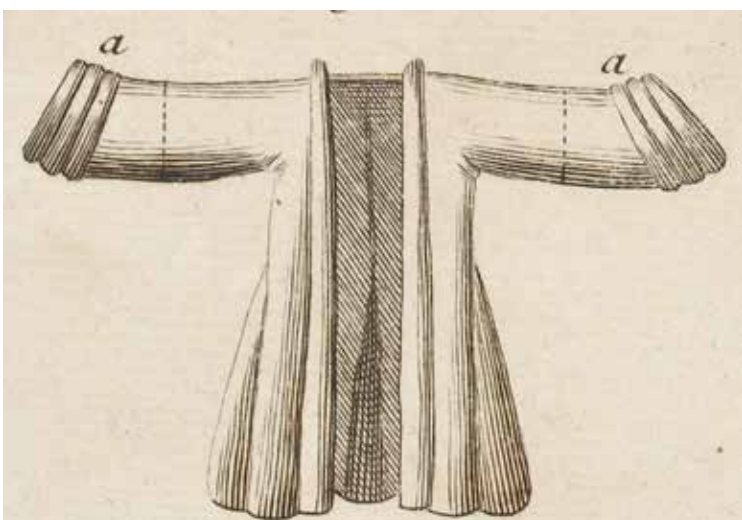
**2-Day Course**  
from 10am to 6pm

Using a cut and construction sequence published in the late 18th century from an interview with the Court mantua-maker to the Princesse de Carignan this class will explore the making of patterns by the method of folding a length of textile, diagrams of which are included in the introduction of our new book.

Students will make several small scale paper models and a half-scale garment in fabric from the instructions.

£210 full price / £150 concession price

**6 PLACES**



# HOW TO RESEARCH HISTORICAL DRESS

1st APRIL



## 1-Day Course from 10am to 6pm

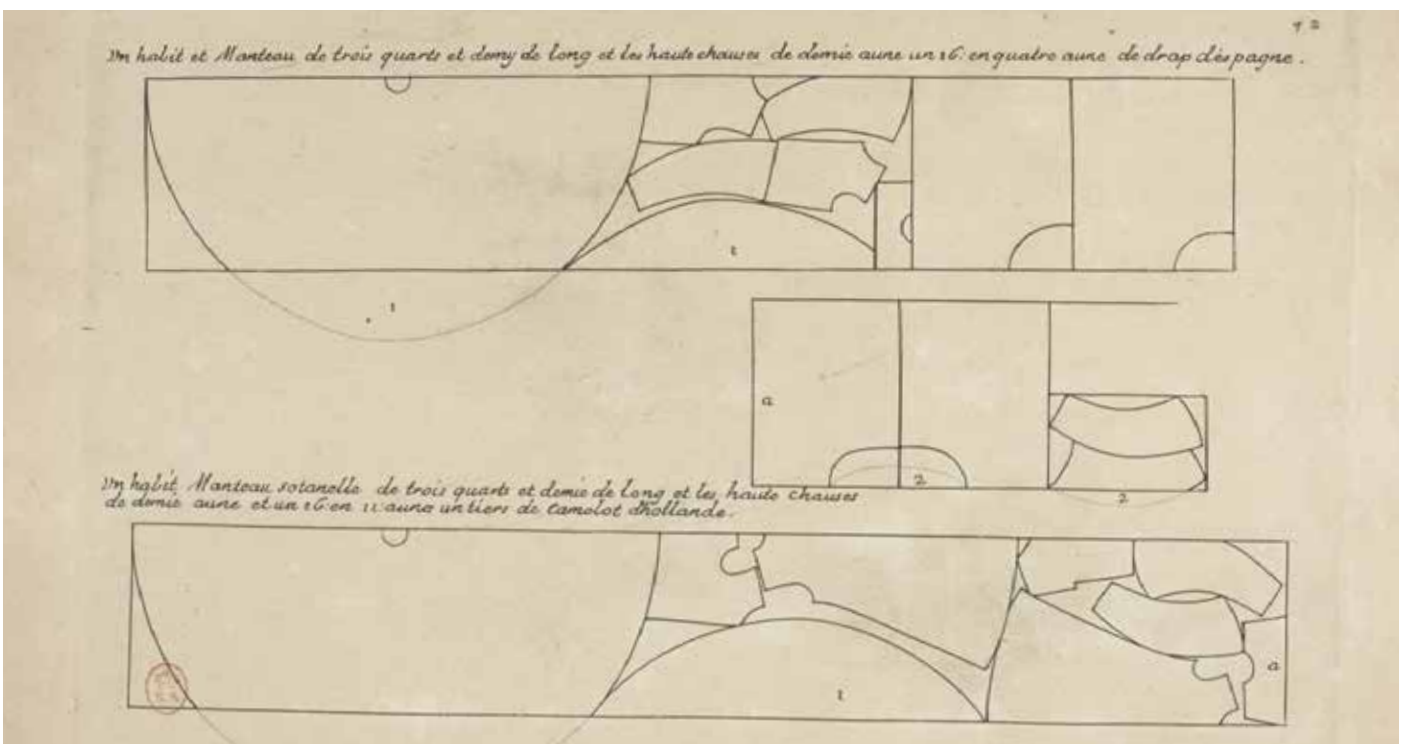
This course aims to present the various sources available when researching cut and construction for historical dress. From little known printed resources to museum collections online, students will be presented a wide range of references and guided on how to use them efficiently.

Historical research is a vital tool for professionals and students involved in textile and dress history as museum curators, fashion designers and makers, costume designers and makers, textile conservators, living history interpreters and enthusiasts.

Each student will be supplied with an extensive bibliography.

£105 full price / £75 concession price

6 PLACES





# MADAME GRÈS & THE ART OF PLEATING

## 15th APRIL

1-Day Course - from 10am to 6pm

Madame Grès sculpted garments, shaping large volumes of fabric with tiny pleats to fit the body. Students will learn the techniques, making samples of the pleating and construction.

The Madame Grès gown from the School's collection pictured left, will be available along with further garments for detailed study.

£105 full price / £75 concession price

6 PLACES





Students may keep all toile/samples at the end of all the courses.  
All materials will be provided.

**ALL CLASSES ARE HELD AT  
THE SCHOOL OF HISTORICAL DRESS  
52 LAMBETH ROAD  
LONDON, SE1 7PP**

To purchase a place please go to the online shop  
<https://shop.theschoolofhistoricaldress.org.uk/>

**CONCESSIONS** - Unwaged, full-time students, over 65 years of age and anyone receiving jobseeker's allowance, income support or disability benefit

**All fees are non-refundable**

If you cannot attend we will endeavour to fill your place and return the fee. However, we cannot guarantee this. This is the only way we can keep our classes to 6 students or less per tutor and budget to keep the high standards of teaching to which we are committed.

**Refreshments and a simple vegetarian lunch  
is provided for every class.**

The School of Historical Dress  
instagram - theschoolofhistoricaldress1  
<https://www.facebook.com/theschoolofhistoricaldress>  
[www.theschoolofhistoricaldress.co.uk](http://www.theschoolofhistoricaldress.co.uk)  
[info@theschoolofhistoricaldress.org.uk](mailto:info@theschoolofhistoricaldress.org.uk)

Company Registration Number: 7017312. (England and Wales) Registered Charity Number: 1142188  
The School of Historical Dress aims to be an equal opportunities employer



**Our first exhibition 'WHITE' is open at  
our School in London on Fridays 4pm-  
8pm, Saturdays and Sundays 12noon-  
4pm, until the end of January.**

**Admission free**

**LIVE Virtual tours of the exhibition  
via Zoom are available throughout  
January. The first is on Saturday 7th  
January. Look out for more dates on  
our online shop.**

**Tickets £10**

